



# Engineered Flood Vents

SMART VENT PRODUCTS, INC.



**Flood vents protect enclosures by allowing automatic bi-directional water flow that equalizes hydrostatic pressure.**

## Applications

Crawlspaces | Full Height Enclosures | Parking Garages | Storage Facilities | Foyers



*Insulated 1540-520 in Stainless Steel*



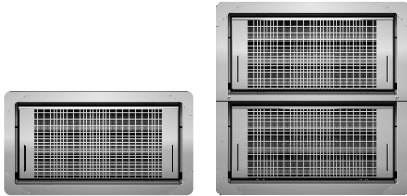
*Dual-Function Stacker 1540-511 in Powder Coat White*



*Insulated Wood Wall 1540-570 in Stainless Steel*

## Dual-Function

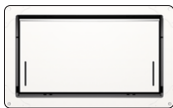
STEEL GRAY WHITE BLACK WHEAT CUSTOM



### Standard Dual-Function

1540-510 + 1540-511

Automatic ventilation. A bi-metal coil opens + closes the louver as the temperature changes. Stacker models are ideal for large square footages with less openings.



### Garage Door Model

1540-524 + 1540-574

Designed for garage doors or heavily trafficked entry doors. Available in insulated or dual-function models.

## Insulated

STEEL GRAY WHITE BLACK WHEAT CUSTOM



### Standard Insulated

1540-520 + 1540-521

Ideal for areas requiring flood venting protection but not natural air ventilation. Stacker models are ideal for large square footages with less openings.



### Insulated Wood Wall

1540-570

Designed to fit between studs spaced 16" on center. Pre-drilled slots in the four corners of the vent flange make for easy installation.

## FEATURES



**Stainless Steel**  
316L Marine  
Grade

**15**

**Guaranteed**  
15-Year Extended  
Warranty



**USA**  
American  
Made



**Secure**  
Internal Floats  
Keep Door Latched



**Support**  
In-House Engineering  
+ Design Assistance



Certified  
Flood Protection

MODEL	FLOOD COVERAGE	AIR VENTILATION	DIMENSIONS	ROUGH OPENING
<b>1540-510</b>	200 sq ft	51 sq in	16"W x 8"H x 3"D	16 <sup>1</sup> / <sub>4</sub> " x 8 <sup>1</sup> / <sub>4</sub> "
<b>1540-511</b>	400 sq ft	102 sq in	16"W x 16"H x 3"D	16 <sup>1</sup> / <sub>4</sub> " x 16 <sup>3</sup> / <sub>8</sub> "

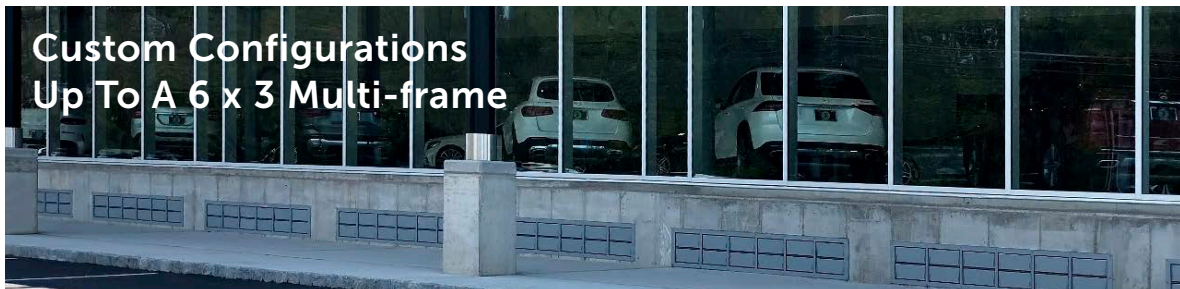
MODEL	FLOOD COVERAGE	R-VALUE	DIMENSIONS	ROUGH OPENING
<b>1540-520</b>	200 sq ft	8.34	16"W x 8"H x 3"D	16 <sup>1</sup> / <sub>4</sub> " x 8 <sup>1</sup> / <sub>4</sub> "
<b>1540-521</b>	400 sq ft	8.34	16"W x 16"H x 3"D	16 <sup>1</sup> / <sub>4</sub> " x 16 <sup>3</sup> / <sub>8</sub> "
<b>1540-570</b>	200 sq ft	8.34	14.5"W x 8.5"H x 3"D	14 <sup>1</sup> / <sub>2</sub> " x 8 <sup>3</sup> / <sub>4</sub> "
<b>1540-524</b>	200 sq ft	8.34	16"W x 8"H x 3"D	16 <sup>1</sup> / <sub>4</sub> " x 8 <sup>1</sup> / <sub>4</sub> "
<b>1540-574</b>	200 sq ft	8.34	14.5"W x 8.5"H x 3"D	14 <sup>1</sup> / <sub>2</sub> " x 8 <sup>3</sup> / <sub>4</sub> "

# Smart Vent Multi-Frames

SMART VENT PRODUCTS, INC.



Customizable one-piece frame with fewer openings for commercial applications or large square footages.



6 x 2 Insulated #1540-150602 Custom Gray

## 1 Flood Door

STEEL GRAY WHITE BLACK WHEAT CUSTOM

Dual Function 1540-0039

Insulated 1540-0239



6 x 3 Insulated #1540-150503 Standard Stainless Steel

## 2 Frame

Standard Multi-frame

1/8 inch thick angle iron for an extremely sturdy, element-resistant design.

"E" Multi-frame

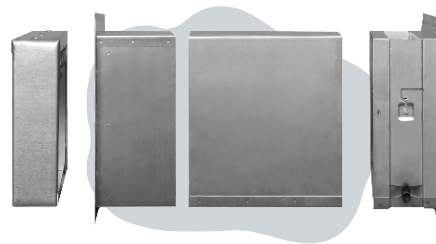
The same superior design using a lighter steel material to provide a more economical solution.

## 3 Configuration

MODEL	DESIGN	COVERAGE	"E"				
1540-150102	1W x 2H	400 sq ft	✓	1540-150401	4W x 1H	800 sq ft	x
1540-150103	1W x 3H	600 sq ft	✓	1540-150402	4W x 2H	1600 sq ft	x
1540-150201	2W x 1H	400 sq ft	✓	1540-150403	4W x 3H	2400 sq ft	x
1540-150202	2W x 2H	800 sq ft	✓	1540-150501	5W x 1H	1000 sq ft	x
1540-150203	2W x 3H	1200 sq ft	✓	1540-150502	5W x 2H	2000 sq ft	x
1540-150301	3W x 1H	600 sq ft	✓	1540-150503	5W x 3H	3000 sq ft	x
1540-150302	3W x 2H	1200 sq ft	✓	1540-150601	6W x 1H	1200 sq ft	x
1540-150303	3W x 3H	1800 sq ft	✓	1540-150602	6W x 2H	2400 sq ft	x
				1540-150603	6W x 3H	3600 sq ft	x

# Smart Vent Accessories

SMART VENT PRODUCTS, INC.



**Accessories + products that pair with Smart Vents to upgrade your energy efficiency, finish a look, meet codes or for installation.**



**Sealing Kit**  
Energy Saving



Finishes off interior spaces + lowers energy bills, effectively meeting 2018 Energy Codes.

**SINGLE** 1540-526

**STACKER** 1540-526-2



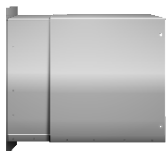
**HurriBond™**  
2-in-1 Adhesive



A fast curing, multi-purpose, waterproof sealant + adhesive used for installing Smart Vents.

**WHITE** HB-3100

**GRAY** HB-3200



**Trim + Sleeve Kit**  
Standard + Wood Wall

Provides a clean, finished look on interior walls. Adjustable.

**7" - 12.5"** 1540-531-12

**10" - 15.5"** 1540-531-15

**4" wall depth** 1540-573

**9" wall depth** 1540-573-9

STANDARD  
WOOD WALL



**Fire Damper**

Standard + Wood Wall

UL Certified. For use in fire-rated walls. 2 or 3-hr options available.

**STANDARD** 1540-530

**WOOD WALL** 1540-537